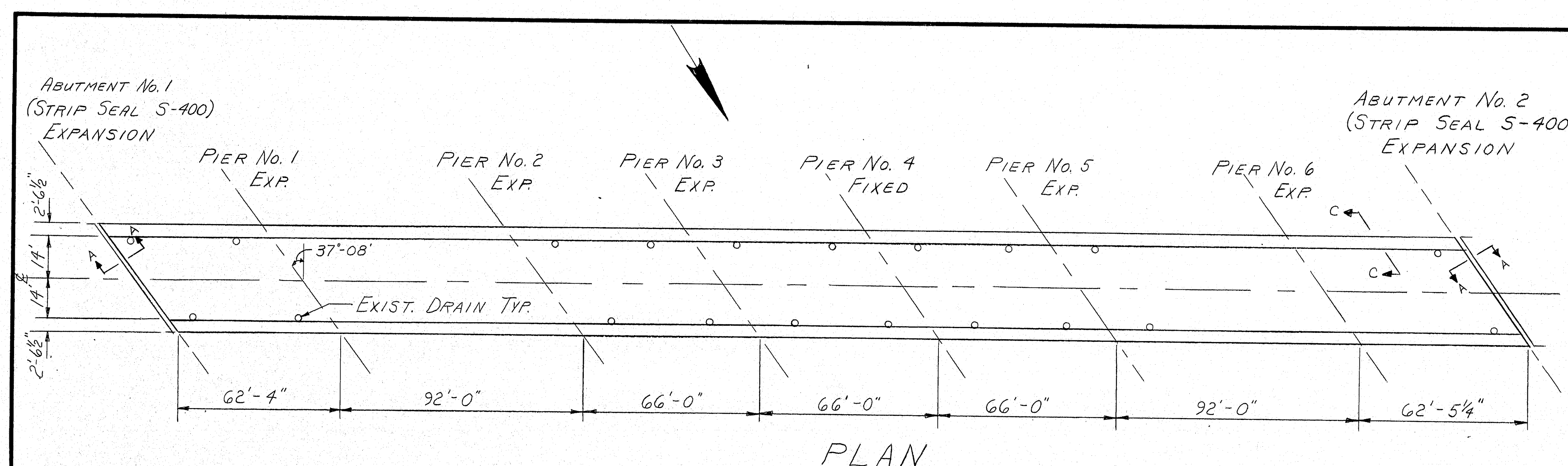
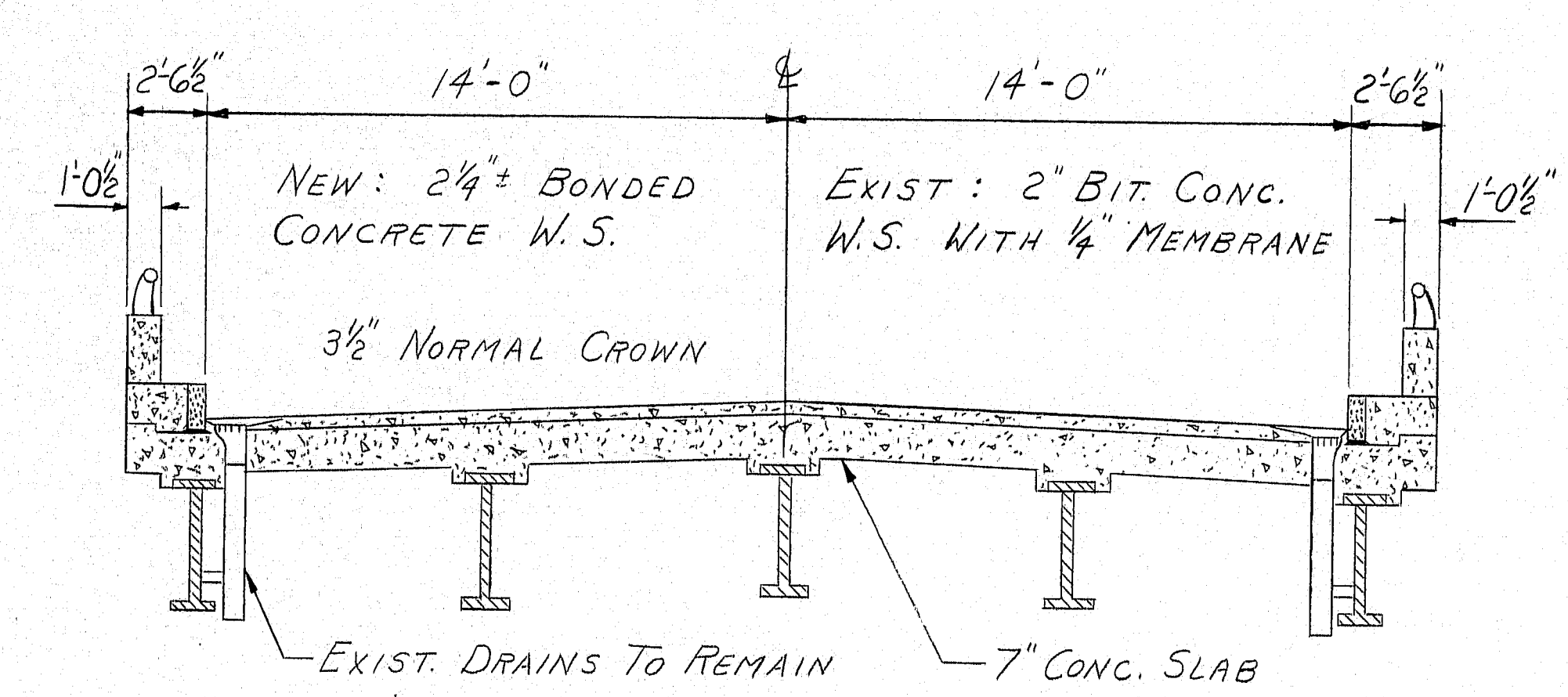


F.R.A. REQ. NO.	STATE	PROJECT NUMBER	SHEET NO.	TOTAL SHEETS
1	MAINE			

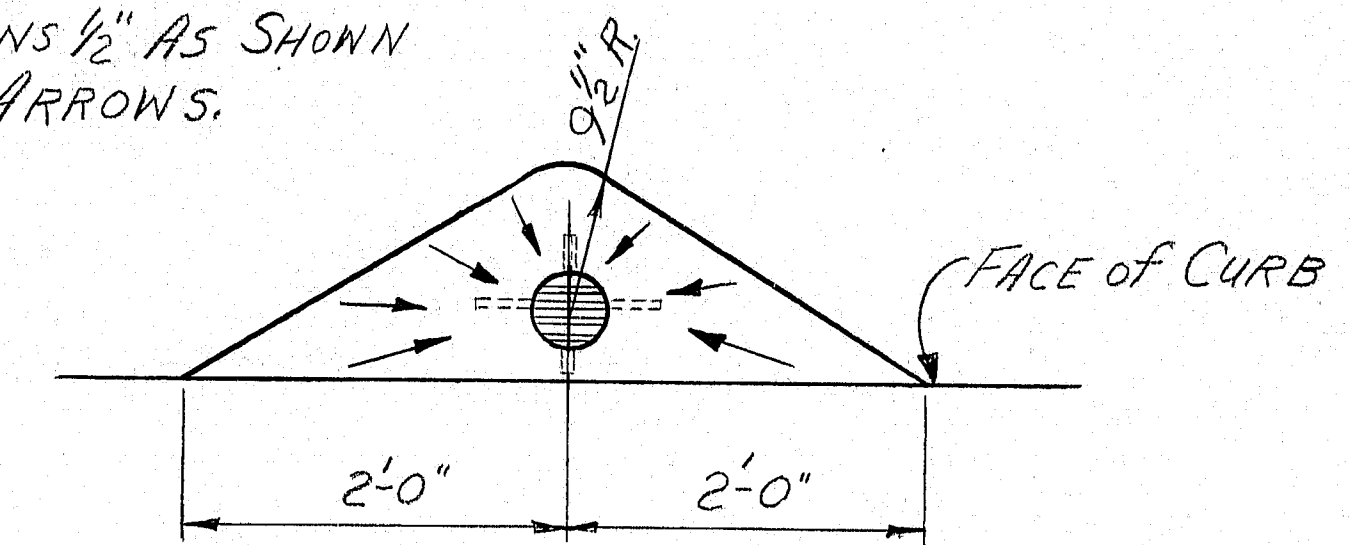


PLAN



TRANSVERSE SECTION

DEPRESS W.S. AROUND DRAINS 1/2" AS SHOWN BY ARROWS.



TYPICAL DRAIN SLOPE DETAIL

SCOPE OF WORK

REMOVE THE FOLLOWING ITEMS:
EXISTING 2" BITUMINOUS CONCRETE W.S. AND 1/4" MEMBRANE WATERPROOFING, EXISTING END POSTS AND PORTIONS OF PARAPETS NECESSARY TO INSTALL NEW END POSTS, AND PORTION OF STEEL FINGERS AT ABUTMENTS No. 1 & 2.

INSTALL THE FOLLOWING ITEMS:
NEW STRIP SEALS (S-400) WITH TYPE "A" STEEL EXTRUSIONS AT ABUTMENTS No. 1 & 2, AND 4 NEW END POSTS.

ALSO PLACE A NEW 2 1/4" BONDED CONCRETE WEARING SURFACE AND PAINT THE STRUCTURAL STEEL.

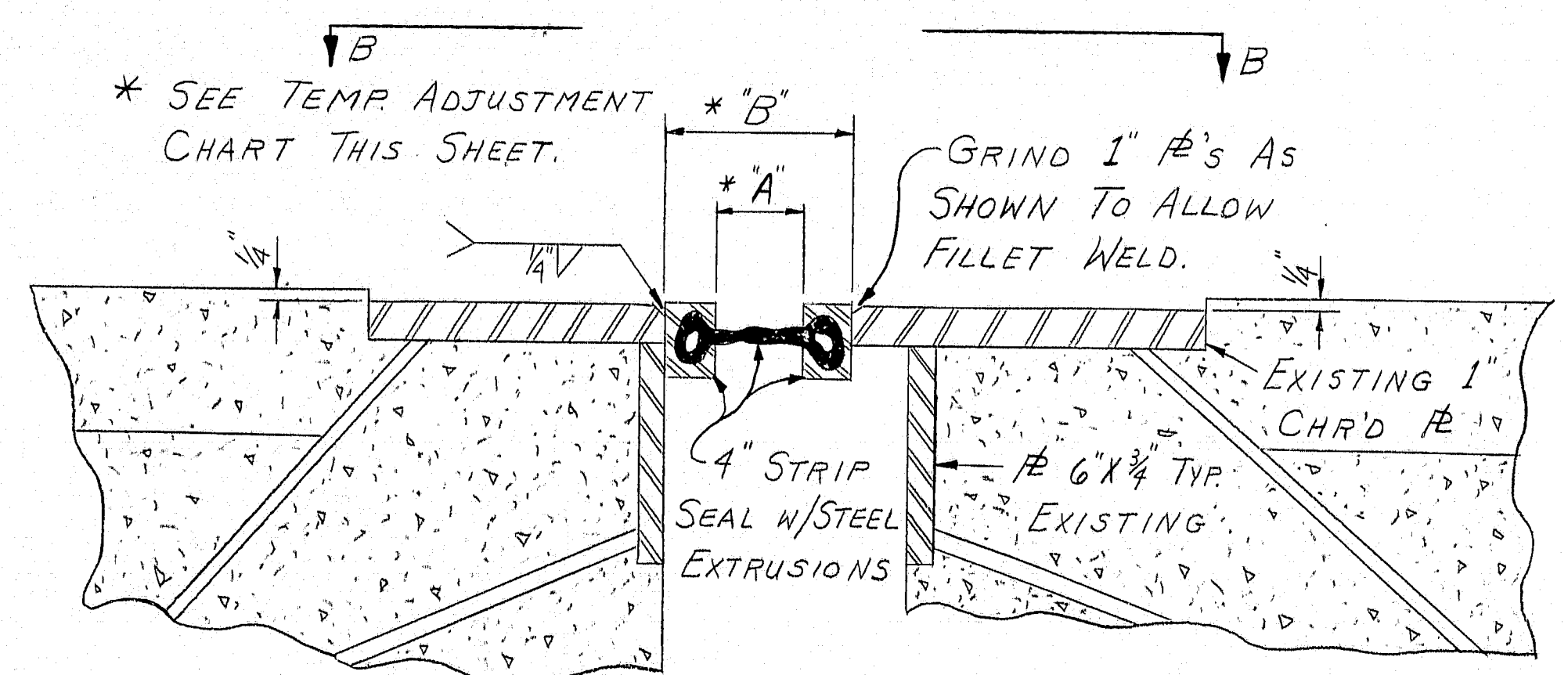
MATERIALS

JOINTS: 140 L.F. ± ~ TYPE "A" STEEL EXTRUSIONS FOR STRIP SEALS, 2-4" STRIP SEALS (S-400) APPROXIMATELY 35' LONG.
ENDPOSTS: SEE SHEET No. 2

EST. CONCRETE VOLUME

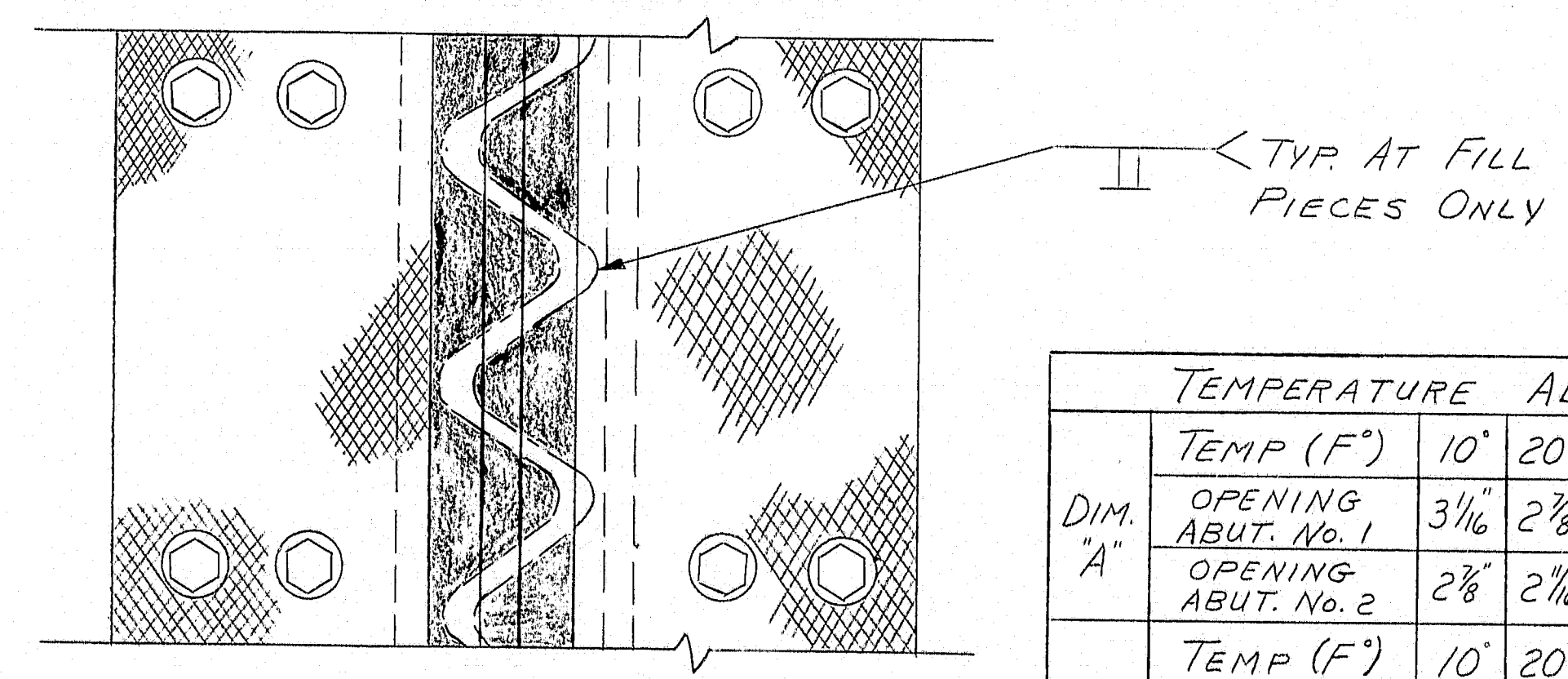
$$\frac{(507' \pm)(28')(24")}{(27)(12)} = 98.5 \text{ C.Y.}$$

SAY 99 C.Y.



SECTION A-A

CUT TIPS OF FINGERS AS SHOWN IN SHADED PORTION. USE PIECES TO FILL GAP AFTER EXTRUSIONS ARE IN PLACE. SIDES MUST BE CUT PARALLEL.



VIEW B-B

TEMPERATURE ADJUSTMENT CHART										
TEMP (F°)	10°	20°	30°	40°	50°	60°	70°	80°	90°	
DIM. A' OPENING ABUT. No. 1	3 1/16"	2 7/8"	2 5/8"	2 3/8"	2 1/8"	1 7/8"	1 5/8"	1 3/8"	1 1/8"	
OPENING ABUT. No. 2	2 7/8"	2 1/2"	2 1/8"	2 1/4"	2 1/8"	2	1 7/8"	1 5/8"	1 3/8"	
DIM. B' TEMP (F°)	10°	20°	30°	40°	50°	60°	70°	80°	90°	
OPENING ABUT. No. 1	6 1/4"	5 7/8"	5 5/8"	5 3/8"	5 1/8"	4 7/8"	4 5/8"	4 3/8"	4 1/8"	
OPENING ABUT. No. 2	5 7/8"	5 5/8"	5 3/8"	5 1/8"	5 1/4"	5	4 7/8"	4 5/8"	4 3/8"	

100 - 403

STATE OF MAINE
DEPARTMENT OF TRANSPORTATION
BRIDGE NO. 6062
ROUTE No. 16
OVER
INTERSTATE 95
IN THE CITY OF
OLD TOWN
PENOBSCOT COUNTY
CONC. W.S., STRIP SEALS
SHEET 1 OF 2 AUGUSTA, MAINE FEB 1987

PROJECT DESIGN ENGINEER	DATE
DESIGN - DETAILED	
CHECKED	
REVISIONS	
FIELD CHANGES	
PLANS	

BRUNING 44-132 6710-1